



SorbET

menu

nails



Soft Gel Tips



Soft Gel Tips + Gelish	R570
Soft Gel Tips + Gelish with backfill	R490

Gel Polish



	Hands	Feet
Gel Polish (Hands & Feet only)	R345	R345
Gel Polish with Ombre	R345	
Gel Polish Mini	R440	R460
Gel Polish Power	R520	R540

Gel Polish Combos

(combos to be redeemed on the same day)

Gel Polish Hands + Gel Polish Feet + 2 Soak Offs (SAVE R40)	R780
Gel Polish Hands + Gel Polish Power Pedi + Soak Off + 1 FREE Soak Off	R945
Gel Polish Power Mani + Gel Polish Power Pedi + 2 FREE Soak Offs	R1060

Manicures & Pedicures

	Hands	Feet
Quick - file, buff + paint	R195	R210
Mini - soak, file, buff + paint	R295	R310
Power - soak, file, buff, paint, exfoliation + massage	R365	R385
No Paint Power - excludes polish	R265	R335
Summer Heel - excludes pedicure*		R220
12 years and under	R120	R135

Anti-ageing

A scientifically formulated, advanced anti-ageing manicure and pedicure. Utilising products that are packed with growth factors and other pharmaceutical grade ingredients to ensure long lasting and effective results.

Anti-Age	R450	R495
Anti-Age + Gel Polish	R595	R645



MediPedi

A non-invasive advanced paramedical foot treatment to soften callouses, corns, cracked heels or rough dry skin on the feet.

MediPedi No Paint	R590
MediPedi + Paint	R710
MediPedi + Gelish	R795
MediPedi + EVO	R795

DMK

Danné Montague K ng®

* Available at selected stores

Harmony Acrylic

TIPS

+ Colour	R520
+ Ombre	R550
+ Gel Polish	R570
+ Ombre Gelish	R600

OVERLAY

+ Natural / Colour	R470
+ Ombre	R490
+ Gel Polish	R520

FILL, BUFF

+ Natural	R360
+ Polish	R380
+ Ombre	R390
+ Gel Polish	R430

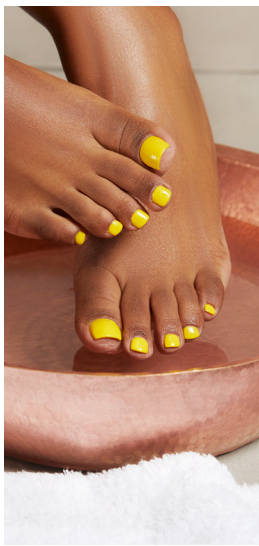


Sculptured Nails*

+ Colour	R580
+ Gel Polish	R610

FILL, BUFF

+ Natural	R390
+ Ombre	R420
+ Gel Polish	R450



Biogel by Bio Sculpture

BIOGEL

+ Hands Only	R435
+ Mini Mani	R570
+ Power Mani	R620
+ Feet Only	R435
+ Power Pedi	R630

TIPS

+ Gel Polish	R590
--------------	------

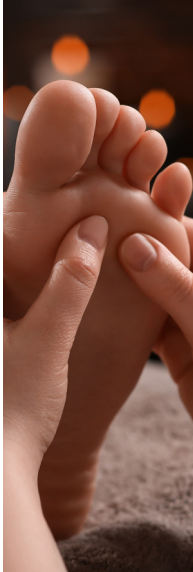
OVERLAY

+ Polish	R495
+ Gel Polish	R540

FILL, BUFF

+ Polish	R385
+ Natural	R365
+ Gel Polish	R425





Polygel

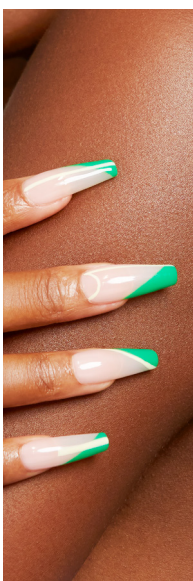
WITH GEL POLISH

+ Tips	R640
+ Overlay	R585
+ Fill & Buff	R510
+ Sculptured	R670

Soak Offs & Removals

(when doing a new set or reapplication)

Gel Polish	E-file	Acrylic	Biogel	Polygel	Gelish Soft Gel
R65	R65	R80	R75	R75	R75
				No Paint	Paint (incl)
				Soak Off Gel Polish with Quick Mani	R140 R240
				Soak Off Acrylic with Quick Mani	R160 R250
				Soak Off Polygel with Quick Mani	R160 R250



Nail Rehab

IBX

+ Nail Repair	R140
+ Soak Off	R200

Nail Add Ons & Repairs

Nail Repair

+ Gel Polish	R45
+ Biogel	R45
+ Acrylic	R55
+ Polygel	R55
+ Soft Gel Tips	R55

Paraffin Dip

+ Hands / Feet	R160
----------------	------

Add On

+ French Paint	R45
+ Rubber Base*	R30
+ Builder Brush on Gel	R50
+ Summer Heel Express*	R160
NEW + Chrome Full Set	R220



Nail Art*

Nail Art (per nail) using Gelish Blooming Gel	R15
Nail Art Basic (per nail)	R15
Nail Art Sticker (per nail)	R25
Nail Art - Chrome or Rhinestone (per nail)	R25
Paint On Nail Art (per nail)	R35

* Available at selected stores



facials

SKIN

FREE Face Mapping (15min)

A professional, in-depth skin analysis based on your skin and lifestyle.

Discover Dermalogica

A 30-minute treatment to brighten and hydrate the skin.

R580

Sorbet Exclusive

Treatment includes an advanced exfoliation, a vitamin mask and a 10-minute full back and shoulder massage.

R890

TARGETED TREATMENTS:

Best results when booked as a programme of 3 to 6 treatments.

Pro Bright

Treats dark spots, melasma and sun damage.

R950

Pro Clear

Treats breakout-prone skin and oily/congested skin.

R950

Pro Firm

Treatment includes skin resurfacing and advanced techniques to firm and tone.

R950

Pro Calm

Hydrate, balance and restore the skin to treat skin irritation and reduce sensitivity.

R950

Add on

Retinol Accelerator (10 min)

Boosts the skin renewal process for enhanced results.

R150

PEELS:

30min

60min

Ultra Bright Peel

30-minute fast-acting peel targeting hyperpigmentation.

R770

Power Clear Peel

30-minute fast-acting peel targeting breakout-prone skin.

R770

Advanced Renewal Peel

30-minute fast-acting peel targeting ageing.

R770

ADVANCED TREATMENT:

Dermalogica Pro Microneedling

A minimally invasive treatment to treat dark spots, wrinkles, and pores.

R1800

DMK*

DMK

Danné Montague-King®

DMK Advanced Paramedical Skin Revision protocols and peels to encourage optimum results

60min

90min

Hydrating Infusion Treatment

Increase hydration for a healthy, brighter complexion.

R610

Acu Klenz Treatment

A purifying treatment for a clearer complexion.

R650

PEELS:

DMK Oxygen Glow Enzyme Treatment

Great for acne, ageing and pigmentation.

R1030

Rapid Exfoliation Enzyme Treatment

Improves the appearance of dull skin for a radiant complexion

R815

	45min	60min
Essential Vitamin Touch (Without DF machine)	R570	R760
Delivers essential vitamins to the skin for a healthy-looking complexion.		
	Without DF machine	With DF machine*
Focus On: Frown, Eye, Texture, Even Tone & Filler		R490
30-minute treatment to focus on targeted skin concerns.		
Essential Youth Reset	R750	R850
Helps soften the appearance of fine lines, sun damage & sagging skin, for a more youthful appearance.		
Essential Moisture Boost	R750	R850
Helps reduce the appearance of fine lines caused by dehydration and promotes a more moisturised glow.		
Essential Comfort Calm	R750	R850
Helps soothe and comfort sensitive and irritated skin, leaving the skin feeling restored and radiant.		
Essential Radiance Reveal	R750	R850
Helps target the signs of sun-damage and pigmentation for an even-toned, radiant-looking appearance.		
COOL PEELS:	Without DF machine	With DF machine*
Bright Recovery Cool Peel (60min)	R940	
A lactic acid cool peel that targets ageing, fine lines and uneven skin tone.		
Deep Cleansing Cool Peel (60min)		R820
Purifies the skin to control congestion and breakouts.		
Youth Renew Cool Peel (60min)	R620	R760
Treats premature ageing, fine lines, sun-damage and an uneven skin complexion.		
Blemish Control Cool Peel (60min)	R620	R760
Improves the appearance of blemish-prone and distressed skin.		
Vibrant-C Micro Peel	R595	R760
A concentrated Vitamin C infused peel. Proven to deliver a healthy-looking, evenly toned appearance as well as improved skin texture.		

Exuviance*

	30min	60min
Radiance Recovery	R570	R790
Treatment to detoxify and re-energise the skin for a luminous complexion.		
Revital Hydration	R570	R790
Treats stressed skin to reveal a radiant complexion.		
Total Correct	R600	R1050
This treatment strengthens the skin and targets environmental damage.		
PEELS:		
Balancing Treatment		R1050
Treats oiliness, breakouts, signs of ageing and an uneven skin tone.		
Retinol Reveal		R1400
Advanced peel designed to treat fine lines and wrinkles, leaving a radiant skin. Contains soothing Bisabolol to help calm skin.		

Sorbet*



	30min	60min
Sorbet Anti-Ageing Facial		R525
Rejuvenating treatment that promotes collagen production and increases cellular turnover, providing effective results to slow down the ageing process.		
Sorbet Deep Cleanse & Hydration Facial	R425	
Deep cleansing and purifying treatment that unclogs pores to reveal a clearer complexion, while restoring moisture levels.		
Sorbet Brightening Facial		R565
Improves skin radiance and reduces pigmentation. Includes a Dermaplaning treatment.		



Dermapenworld*



This is a treatment that involves the use of a microneedling device, to create controlled micro-injuries on the skin. This treatment enhances the texture of the skin by promoting scarless healing and stimulating collagen production in the treated area.

Face (only)	R1600	
Face + Neck	R1750	
Face + Neck + Decollete	R1900	
		Add on
Uber Peel Pro		R370

Dermaplaning*

		Add on
Dermaplaning (only)	R520	R400
Dermaplaning exfoliates the skin and removes facial hair, using a surgical blade.		

* Available at selected stores



wax

with benefits

Depilève Waxceuticals® is a target specific waxing solution with minimal to no pain. It treats hyperpigmentation and aids in skin rejuvenation.

Our Soft & Bright range focuses on correcting dull skin and uneven skin tone while our DNA range focuses on deep moisturisation of the skin and restoring skin elasticity.



Legs

Epilfree*

Half Leg	R245	R1170
Three Quarter Leg	R265	R1520
Full Leg	R315	R2170

Intimate

Epilfree*

Bikini	R200	R680
Brazilian	R295	R1150
Hollywood	R340	R1320

Arms

Epilfree*

Under Arm	R170	R570
Half Arm	R195	R770
Full Arm	R255	R1395

Face (hot wax)

Epilfree*

Brows	R115	R410
Lip	R115	R410
Chin	R115	R410
Brows + Lip	R195	R630
Brows + Chin	R195	R630
Lip + Chin	R195	R630
Brows + Lip + Chin	R280	R940
Full Face	R300	R1150

Stomach

Stomach		R160
---------	--	------

NEW V Facials*

Warm Cool

Brightening	R380	R380
Ingrown	R380	R380

NEW Combos

(combos to be redeemed on the same day)

Full Leg + Hollywood + Full Face + Underarm	R1030
Half Leg + Hollywood + Brow & Lip + Full Arm	R830
Full Leg + Underarm + Hollywood + Brows	R865
Half Leg + Underarm + Hollywood + Brows	R800
Full Leg + Brazilian + Underarm	R720
Half Leg + Brazilian + Underarm	R655
Full Leg + Brazilian + Underarm + Brows	R825
Half Leg + Brazilian + Underarm + Brows	R760

relaxed massages



Swedish

Back + Neck (30min) **R390**

Full Body (60min) **R555**

Relaxing Hand or Foot (30min) **R260**

Aromatherapy

Full Body (60min) **R620**

Hot Stone Massage

Back + Neck (30min) **R395**

Full Body (60min) **R625**

BROWS
and lashes



Threading

Brows	R125
Brows + Lip	R210
Brows + Chin	R210
Brows + Lip + Chin	R290
Full Face	R295

Brow Lamination

Brow Lamination	R475
Brow Lamination + Wax + Tint	R640

Eyelash Extensions

Full Set	R790
Half Set or Fill	R500
Volume Lashes Full Set	R980
Volume Lashes Half Set or Fill	R680
Full Set Mixed (hybrid-volume + standard lashes)	R900
Half Set or Fill Mixed (hybrid-volume + standard lashes)	R600
Removal	R180
NEW Removal + Full Set	R875

Lash Lift

Lash Lift	R475
Lash Lift with Tint	R545
Lash Lift with Brow + Lash Tint	R585

Tinting

Brows	R120
Lashes	R130

combos

Brows & Lashes

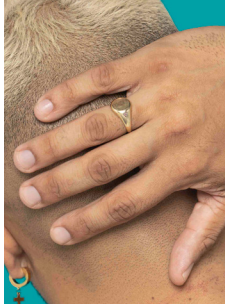
Brow Wax + Tint	R210
Brow Wax + Tint + Lash Tint	R300
Brow Threading + Tint	R225
Brow + Lash Tint	R215

Make-up*

Including brows, eyes, face + lips	R400
------------------------------------	------

* Available at selected stores

grooming



Gents Waxing

Ear or Nose or Brows	R115
Ear + Nose	R195
Stomach	R350
Back	R410
Chest	R400
Half Leg	R250
Full Leg	R370
Full Arm	R280
Back, Chest + Stomach	R910
Underarm	R250

Gents Hands & Feet

Quick Manicure: Clip, File + Buff Only	R185
Power Mani: Soak + Exfoliate + Clip + Buff + Massage	R260
Quick Pedicure: Clip, File + Buff Only	R195
Power Pedi: Soak + Exfoliate + Clip + Buff + Massage	R335
Gel Polish (No Colour)	R305

* Available at selected stores

Join Our Loyalty Programme



Up to 50% off on your Birthday*



Awesome promotions



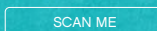
Earn rewards

DOWNLOAD

APP



MENU



OUR PROMISE

If you are not totally satisfied with your treatment, you don't have to pay. We are only happy when you are.

Ts & Cs Apply.

CONTACT US:

JHB Support Office 011 202 7940

KZN Support Office 031 010 0059

CPT Support Office 021 434 3902

FOLLOW US:

   @sorbetgroup

 www.sorbet.co.za